

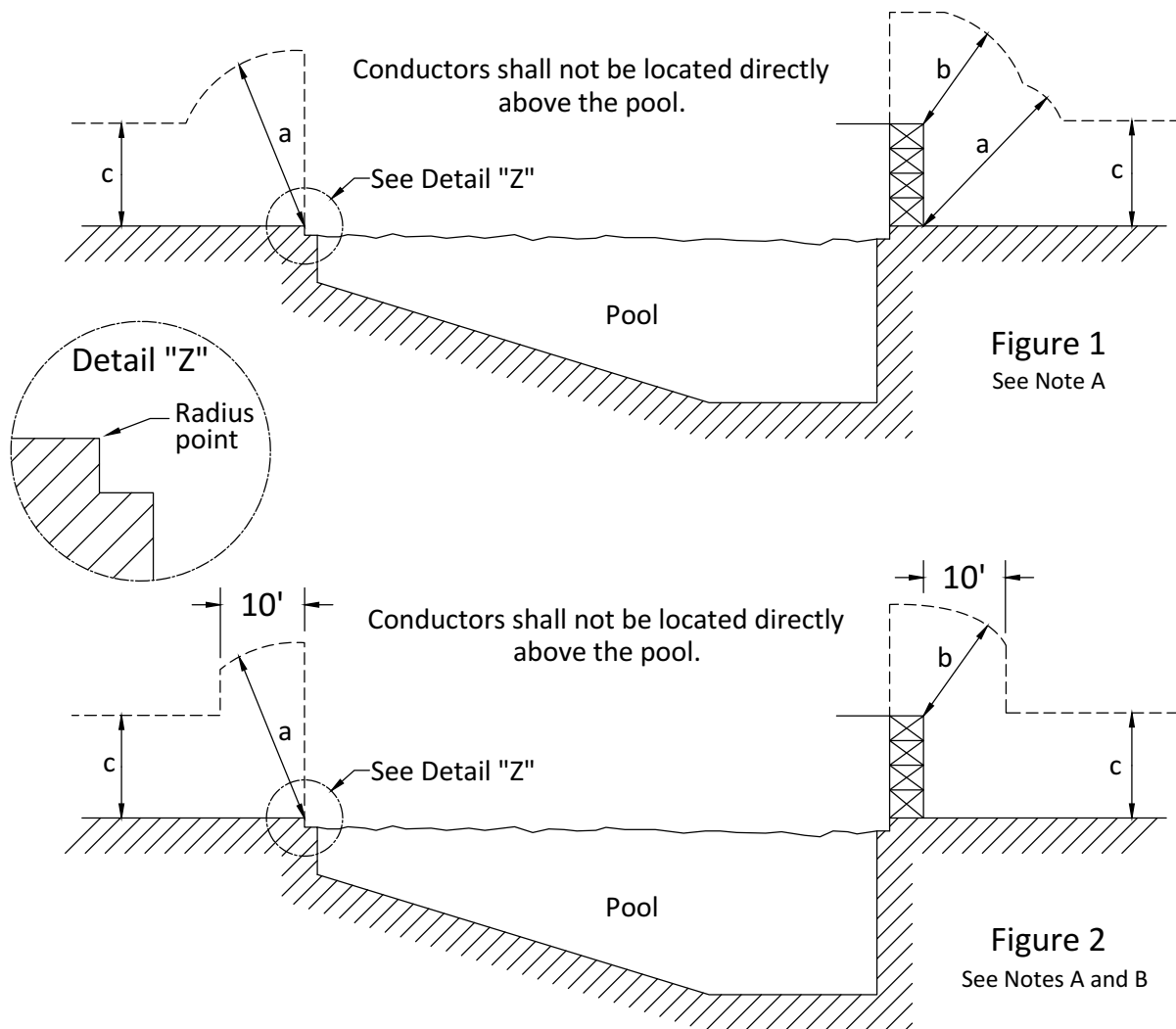
SWIMMING POOLS, SPAS AND HOT TUB REGULATIONS

Swimming pools and spas or hot tubs may be constructed in the rear or side yard when:

1. The pool is not located in any easement or closer than ten (10) feet to any back property line and seven and one-half (7 1/2) feet to any side property line;
2. A barrier of not less than forty-eight (48") inches to the top as measured from ground level to the top of the barrier on the side that faces away from the pool, with self-closing and self-latching gates at all entrances, which completely encloses either the pool area or surrounding the yard area. **THE POOL MUST NOT BE FILLED UNTIL THE BARRIER IS INSTALLED.**
3. All lighting of the pool is shielded or directed to face away from adjoining residences. If lights are not individually shielded, they shall be so placed, or the enclosing wall or fence shall be so designed, that direct rays from the lights shall not be visible from adjacent properties;
4. No broadcasting system is used for the purpose of advertising the operation of the pool or for the attraction of persons to the premises. This shall not prevent a public address system necessary or useful to the supervision of the pool and safety of swimmers;
5. All overhead or underground electric service must meet clearances set forth by Oncor Electric Delivery Co. See attached handout for additional information and requirements; **NO ATTEMPT SHOULD BE MADE TO MEASURE THE HEIGHT OF ELECTRICAL LINES FROM THE GROUND.**
6. All electric wiring must conform to the most current adopted code. The outlet supplied for any cord-attached equipment must be ground fault circuit interceptor (GFCI) protected. All equipment, fences and any metal within ten (10) feet must be grounded;
7. According to the 2015 International Swimming Pool and Spa Code (ISPC), door alarms must comply with Section 305.4 (Structure Wall as a Barrier). This means doors or windows that provide access to the pool area must have an alarm that meets the following criteria:
 - The alarm must be listed and labeled as a water hazard entrance alarm in accordance with UL 2017.
8. Pool steel and bonding must be inspected before the concrete is placed.
9. All pools must have an approved final inspection upon completion and prior to use.

CLEARANCES OF SWIMMING POOLS FROM OVERHEAD FACILITIES

FIGURE 2-B

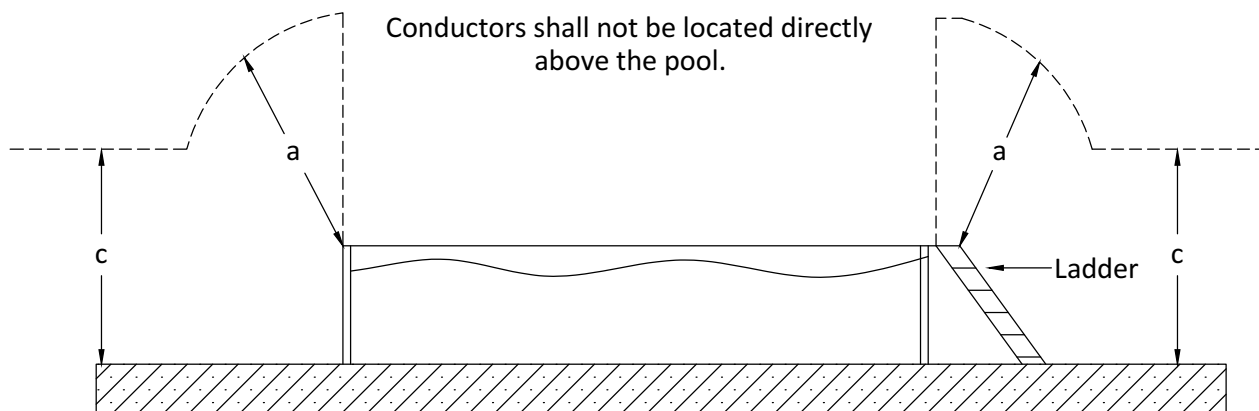


Notes:

- A. Dimensions for "a", "b", and "c" shown above are defined by table on Page 19.
- B. Figure 2 shall be applied ONLY to:
 - Overhead Guys;
 - Neutral Conductor;
 - Cabled Conductor \leq 750 V Phase to Ground

CLEARANCES OF SWIMMING POOLS FROM OVERHEAD FACILITIES (cont'd)

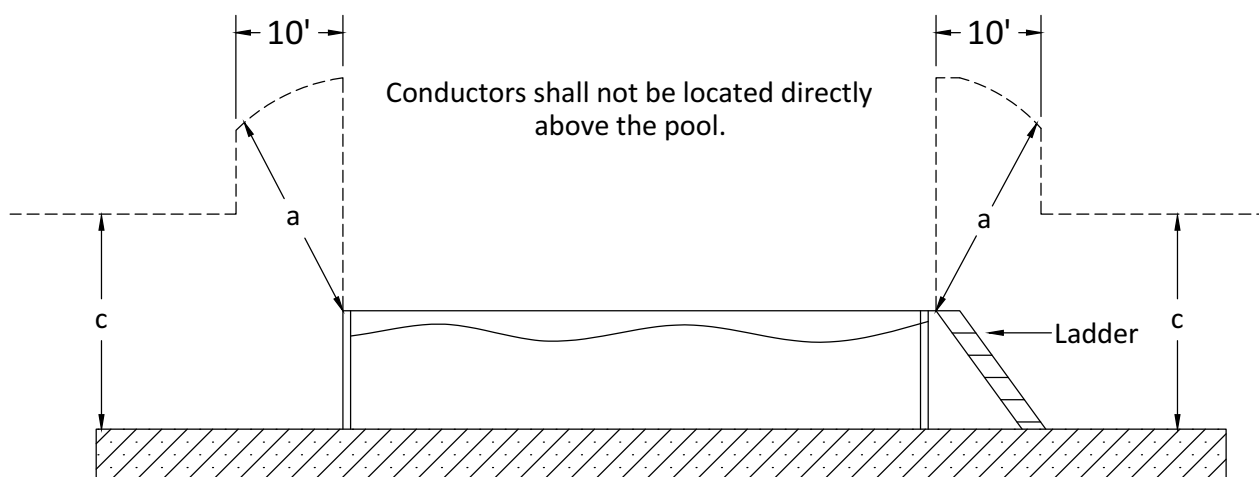
FIGURE 2-B



Above ground swimming pool without a deck. Clearances maintained from the highest point of the installation.

Figure 3

See Notes A and C



Above ground swimming pool without a deck. Clearances maintained from the highest point of the installation.

Figure 4

See Notes A, B, and C

Notes:

- A. Dimensions for "a" and "c" shown above are defined by table on Page 19.
- B. Figure 4 shall be applied ONLY to:
 - Overhead Guys;
 - Neutral Conductor;
 - Cabled Conductor ≤ 750 V Phase to Ground
- C. Proper respective clearances must be maintained if a diving platform, tower, water slide, or other fixed, pool-related structure exists.

CLEARANCES OF SWIMMING POOLS FROM OVERHEAD FACILITIES (cont'd)

TABLE 2-B

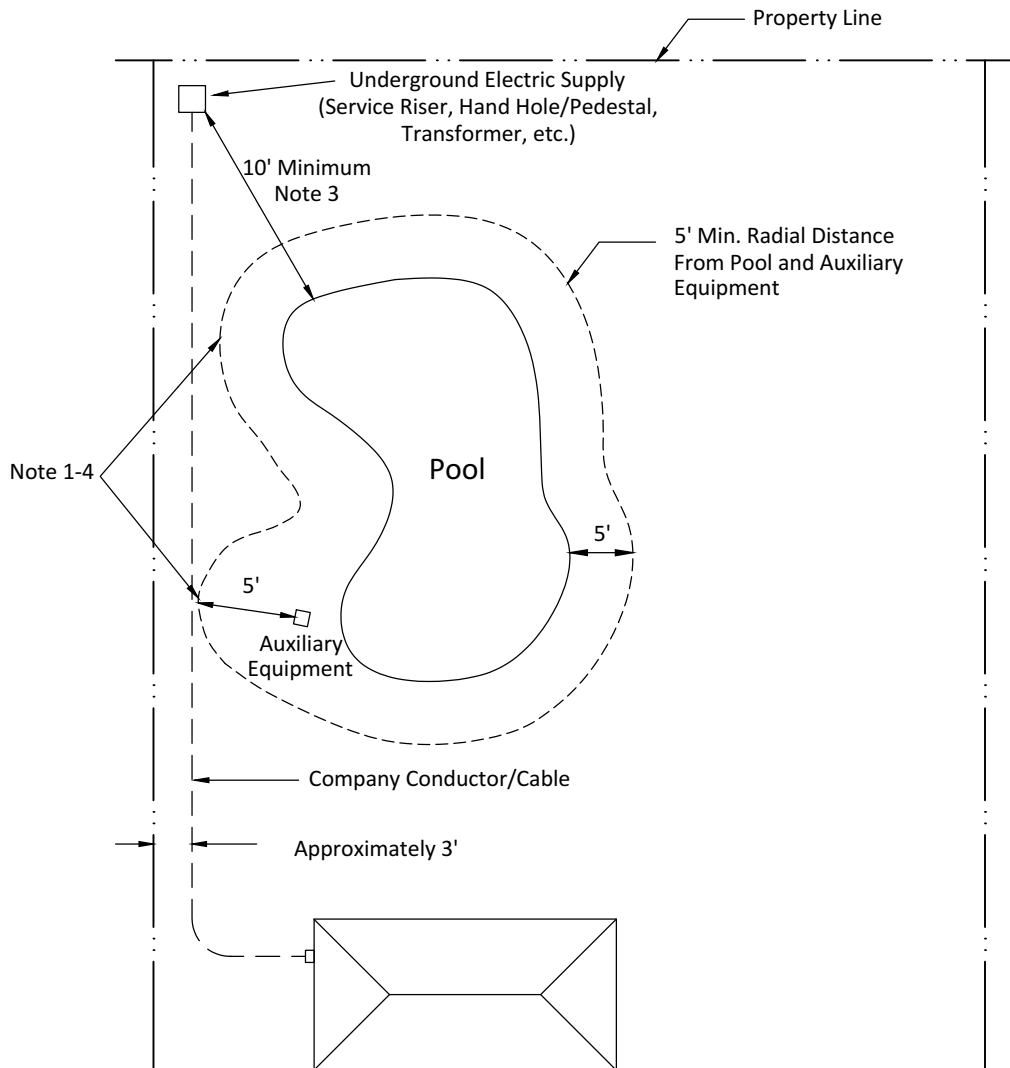
The table below contains clearance values based upon the requirements of the National Electrical Safety Code with allowances for worst case conditions. Actual clearance requirements vary with conductor size and type, ambient air temperature, and other factors. The values shown in the table are meant to be a guideline. **When clearances are less than indicated in the table, the Customer should contact Company for exact requirements based on field conditions.**

Please Note: **Wires, conductors, cables, or unguarded rigid live parts shall not pass over a swimming pool.**

	Requirements	Overhead Guy or Neutral (ft)	Bundled or Cabled Secondary or Service (ft)	Open Wire Secondary or Service (ft)	Pole Line or Primary Conductor (ft)
a.	Clearance in any direction from water level, edge of pool, base of diving platform, or anchored raft.	27	27.5	28	30
b.	Clearance in any direction to diving platform, tower, water slide or other fixed, pool related structure.	19	19.5	20	22
c.	Vertical clearance over adjacent land which is driveways, parking lots, and alleys subject to truck traffic (any vehicle exceeding 8 feet in height).	20.5	21	21.5	23.5
d.	Vertical clearance over adjacent land which is spaces and ways subject to pedestrians or restricted traffic only. *	14.5	17	17.5	19.5
e.	These clearances do not apply to overhead guys, neutral conductors and cabled conductor \leq 750 volts when these facilities are 10 feet or more horizontally from the edge of the pool, diving platform, diving tower, water slide, or other fixed, pool related structure.	10	-	-	-

CLEARANCE OF SWIMMING POOLS FROM UNDERGROUND FACILITIES

FIGURE 2-C



Notes:

1. Company Conductor/Cable - Oncor Electric Delivery Company LLC and its officers, agents, employees, successors, and assigned owned cable and/or conductor. (i.e. primary, secondary, service lateral)
2. A swimming pool or its auxiliary equipment or water pipes shall not be installed within 5 feet of direct-buried company conductor/cable.
3. Where a swimming pool must be installed within 5 feet of an existing direct-buried primary, secondary, and/or service, the primary, secondary, and/or service shall be installed in a continuous conduit to the point of delivery (POD).
4. Conduits installed for company conductor/cable shall be a minimum of 2 feet from the water's edge of the swimming pool. This distance applies to new pool site conduits and to the re-routing of existing company primary, secondary, and/or service.
5. The swimming pool auxiliary equipment conduits, conductors, water pipes, or customer owned facilities may not be installed in the same trench as the company conductor/cable.
6. Pad mounted equipment shall be located 10 feet or more from the water's edge.
7. Local requirements may require greater clearances.
8. For additional information related to company conductor/cable and swimming pools see document DDS1PR at Oncor.com.
9. Allowing pools and pool equipment as close as 2 feet from Oncor owned medium voltage cables (5 through 25 kV) may require the Oncor R.O.W. Department involvement.