



## WiFi Internet Access Connection Procedure WINDOWS XP

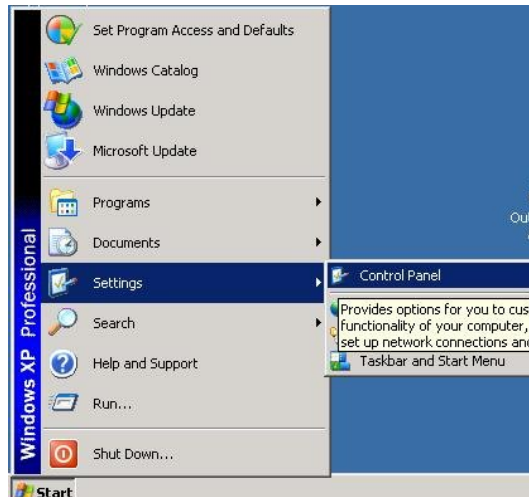
The library has provided wireless network service to connect your personal laptop to the World Wide Web while at your public library. All you need is a laptop, wireless adapter and web browser. There are three steps that you will need to follow in order to connect your wireless device to the library's wireless network.

Please be aware that this is not a secure network. It may be possible for personal data to be lost, damaged, or stolen while connected to the wireless network. Please refer to the library's Internet Use Policy.

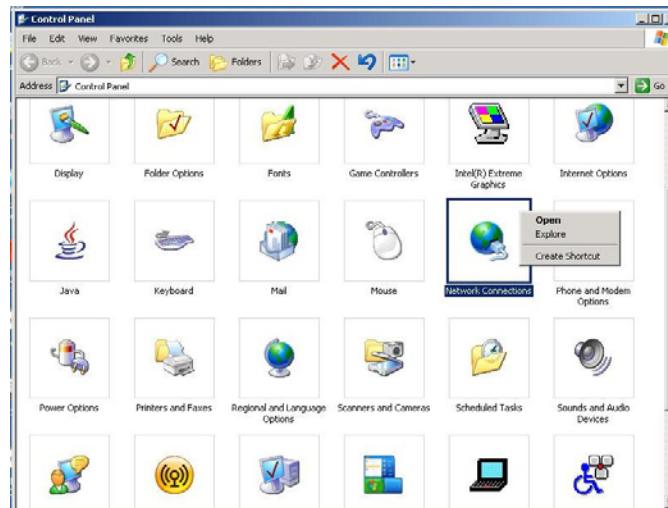
### STEP 1: Set up DHCP

\* If you know that your computer is setup to automatically obtain an IP address, you may skip to step 2.

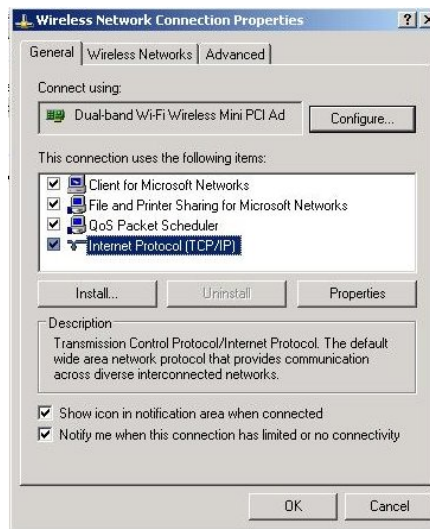
1. Select **Start --> Control Panel--> Network Connections** (depending on the view set up, this might also be labeled Network and Internet Connections).



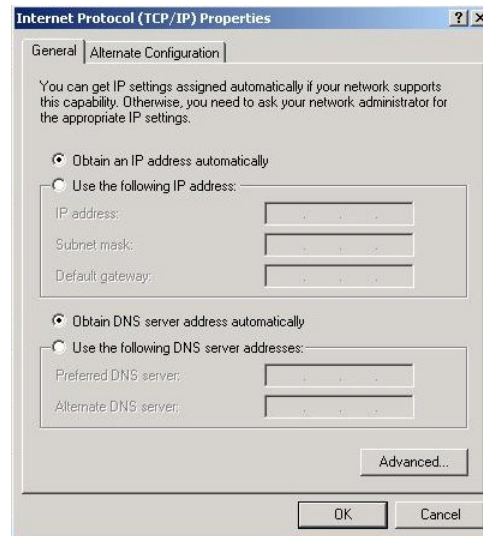
2. Right click **Wireless Network Connection** and then click **Properties**.



3. In the **General** information tab, make sure that **Internet Protocol (TCP/IP)** is checked and highlighted, and then click **Properties**.



4. On this screen, make sure that the "**Obtain an IP address automatically**" radio button is selected. The "**Obtain DNS server address automatically**" should also be selected.



5. Click "**OK**" on all the opened windows to close them.
6. Restart your computer if prompted.

Your computer is now configured for DHCP.

**NOTE:** If you have an Internet service that you often connect to that uses DHCP you will not have to set up this service, but your laptop may have retained that IP address in its files. To get a new IP address through DHCP you will need to release and renew the IP address.

To Release and Renew IP Addresses:

1. Go to a command prompt. In order to get a command prompt, click start and choose run. In the "**open:**" line, type "**cmd**". A black box will open with a command prompt inside it.
2. At the command prompt, type: **Ipconfig /release** - You should get a notice that the address has been released.
3. Now you need to get a number from the library network. At the command prompt, type: **Ipconfig /renew** - After a brief time, you should be notified that you have a new IP address associated with your NIC card. Once you have received a library IP address, proceed to the browser configuration instructions.

\* You must have administrative rights to your computer in order to release or renew your IP address.

## STEP 2: Setup browser proxy settings in Internet Explorer

1. Open Internet Explorer
2. On the IE menu bar, click **Tools**, then **Internet Options**
3. Under the Internet Option dialog box, click the **Connections** tab and then the **LAN Settings** button.
4. In the **LAN Settings** dialog box, click “**Automatically detect settings**”
5. Click OK twice.
6. A print screen of the final result has been provided below.

