



NEWS RELEASE

WACO DISTRICT
Jake Smith
(254) 366-7673
Jacob.Smith@TxDOT.gov

Traffic Switch — FM 116 — Coryell County

Aug. 1, 2022

WACO – TxDOT and its contractor plan to perform a traffic switch and closures on the FM 116/SH 9 project beginning next week. The traffic switch will take effect next Monday, August 8.

Closures in the traffic switch will include closing the inside northbound and southbound FM 116 mainlanes from before the SH 9 intersection to just after. Additionally, SH 9 will be closed entirely through the SH 9 underpass. SH 9 traffic will need to utilize the U-turns at the north and south end of the project. Westbound SH 9 traffic will be redirected northbound on FM 116 for motorists heading south towards the city. This new configuration and closures will be in place to improve safety during the construction of bridges and intersection road surface. Bridge construction and the new underpass are scheduled to open early 2023, weather permitting.

The traffic switch and closures are part of TxDOT's project to construction two overpasses on FM 116 and reconstruct the FM 116 and SH 9 intersection. All changes will improve safety and mobility in the project area.


TxDOT encourages motorists to slow down and pay attention while motorists become acclimated to the new traffic configuration.

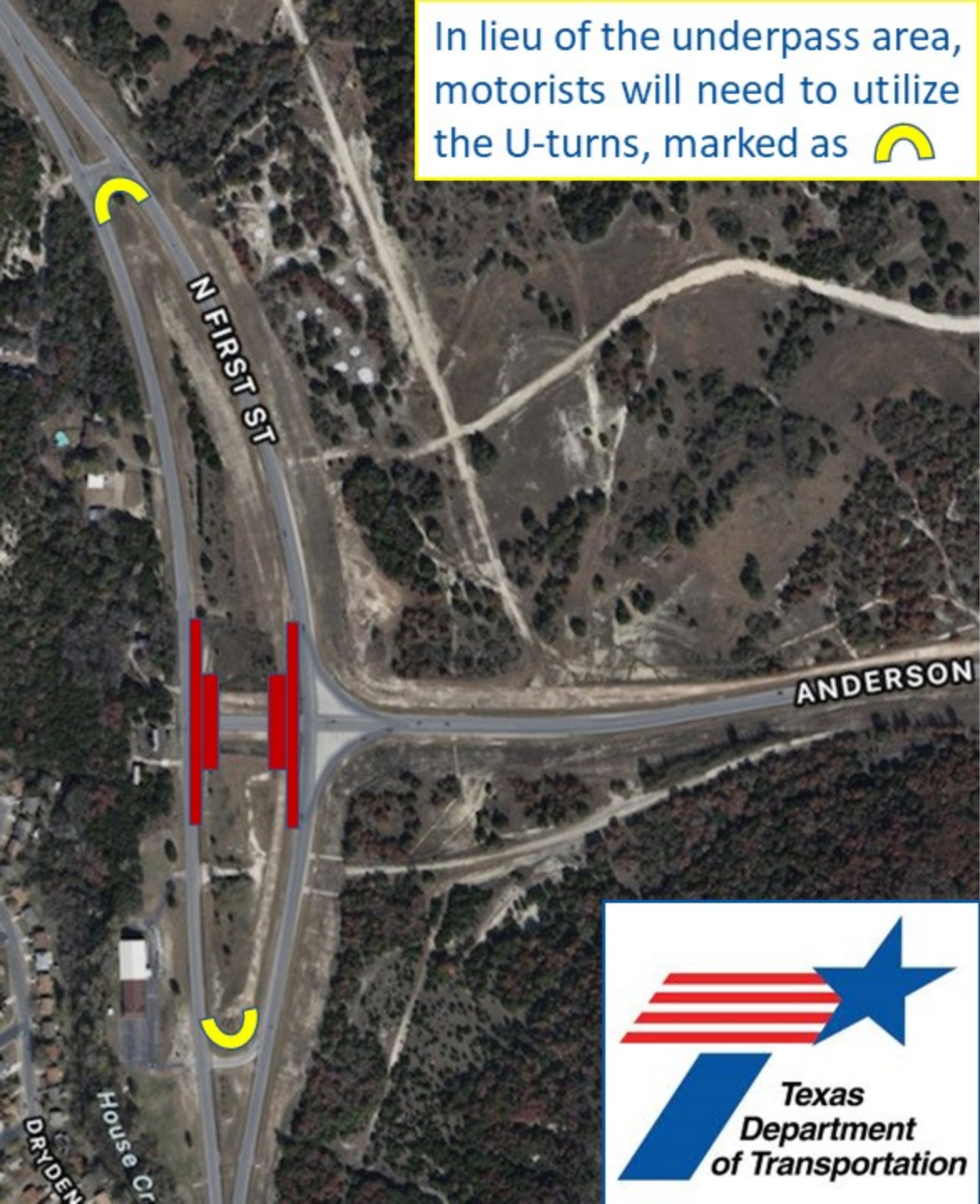
###

The Texas Department of Transportation is responsible for maintaining 80,000 miles of road and for supporting aviation, maritime, rail and public transportation across the state.

Connecting You with Texas

www.txdot.gov | [TxDOT on Facebook](#) | [TxDOT on Twitter](#)

In lieu of the underpass area, motorists will need to utilize the U-turns, marked as 



The City has been notified by TxDOT of a temporary traffic switch and closures in support of the FM 116 and SH 9 project beginning August 8th. Closures in the traffic switch will include closing the inside northbound and southbound FM 116 mainlanes from before the SH 9 intersection to just after. Additionally, SH 9 will be closed entirely through the SH 9 underpass. SH 9 traffic will need to utilize the U-turns at the north and south end of the project. Westbound SH 9 traffic will be redirected northbound on FM 116 for motorists heading south towards the City. This new configuration and closures will be in place to improve safety during the construction of bridges and intersection road surface. Bridge construction and the new underpass are scheduled to open early 2023, weather permitting.